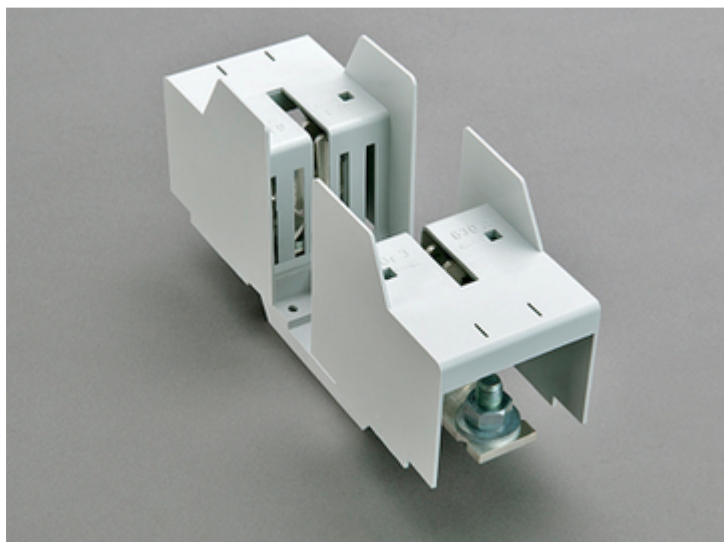


NH.fuse-base 630 A, panel mounting (03 768)



Description

Article

Part No.: 03 768

QUADRON® Panel

NH.fuse-base 630 A, panel mounting

both sides screw, with touch protection

size 3 / 1P

System

Mounting plate

Product group 10

Subgroup 12

pack size 3

EAN 4021267037680

Advantages of the product

For safe connection of the leads, the shock protection is split into 2.

Catalog page 2015 : 6/13

eCl@ss 6.1 27142106
eCl@ss 7.1 27142106
ETIM 4.0 EC000067
ETIM 5.0 EC000067

Approvals

Standards

IEC 60269-1:2006 + A1:2009 + A2:2014
IEC 60269-2:2013

Approvals

Germanischer Lloyd



Product data

Electrical data

Rated current (IEC): 630 A
Rated voltage (IEC) AC: 690 V
Rated voltage (IEC) DC: 440 V

Power dissipation:

The power dissipation at a typical load of 80% of the rated current results to 19.2 W.
(The power dissipation for operation with rated current would be 30 W.)

rated isolation voltage U_i (AC): 800 V
Rated surge voltage U_{imp} : 6 kV
max. permitted voltage (IEC) AC: 1000 V
max. permitted voltage (IEC) DC: 1000 V

breaking capacity with fuses: 50 kA

for fuse links IEC 60269-2 / DIN VDE 0636-201 size 3 up to 60W power dissipation

Mechanical data

W x H x D: 80 x 247 x 134

Weight: 110.8 kg/100

Poles: 1-pole

Connection screw (aluminium terminal can be retrofitted):
screw connection M12, 28 - 32Nm torque,
aluminium connection 2 x M10, cross-section 95 - 240mm²,
Cu - Al, 16 - 20Nm torque

Terminal points

NHUT_SCHRAUBE_M12

Material properties

Main body: temperature stability 125°C,
self-extinguishing in acc. to UL 94,
creepage resistance CTI 200,
halogen-free

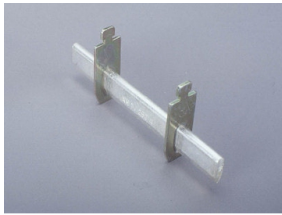
Contacts: spring-loaded copper contacts, silver plated

Connecting screw M12, galvanized, chromized

screws:

Shock protection cover: temperature stability 125°C,
self-extinguishing in acc. to UL 94,
creepage resistance CTI 200,
halogen-free

Accessories



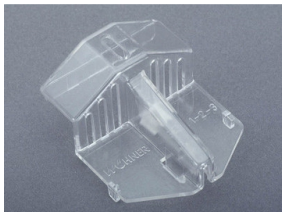
03 164
knife link 630 A
size 3



03 502
NH fuse extractor handle
open
size 000 - 3



03 757
neutral conductor 400 A, disconnectable
screw on both sides



79 449
grip lug cover
for NH fuse base
size 1 - 3